



EXPANDING THE BOUNDARIES
OF HEALTHCARE

The MEDiC™ is designed to
**provide a wide spectrum of
telehealth services**
in a portable, lightweight and ruggedized platform.



*stethoscope sold separately

FEATURES & BENEFITS

The unit is architected to support clinical consultations where mobile telehealth applications including ambulatory care, community-based healthcare, K-12 and many others can be used to enhance patient care and medical access.

1 External AC Power Inlet

Integrated cover
Easy charging
100/240 volt 50/60 Hz

2 Shoulder strap/enhanced mobility

3 12.3" LCD High Resolution Screen

Enhanced viewing

4 Custom Foam Insert

Liquid resistant finish
Easy cleaning
Supports medical peripherals

5 Audio Speakerphone

Clear communications

6 Cable Storage

JEDMED Medical Peripherals included:

7 HORUS Scope and General Lens

8 Dermoscope lens (optional)

9 Otoscope lens (optional)

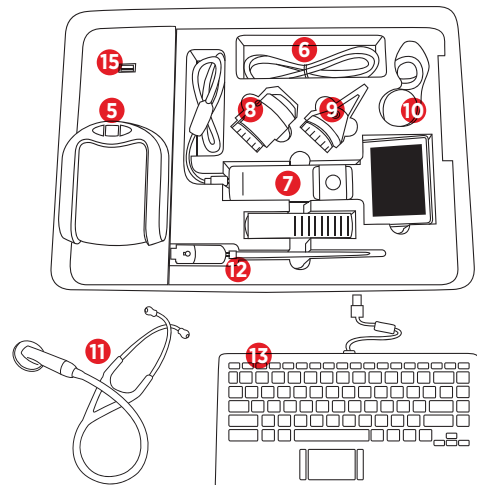
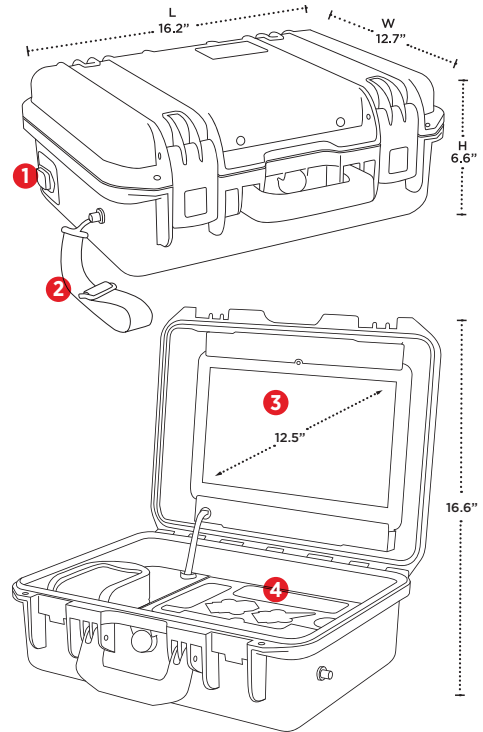
10 Insufflator bulb (optional)

11 Stethoscope (optional)

12 Bluetooth adapter

13 Antimicrobial Keyboard

Integrated touchpad
Enhanced data entry
USB Keyboard Port



Iron Bow Healthcare Solutions, MEDiC™ and CLINiC™ logos are trademarks or registered trademarks of Iron Bow Technologies. (c) Iron Bow Healthcare Solutions. All rights reserved.

